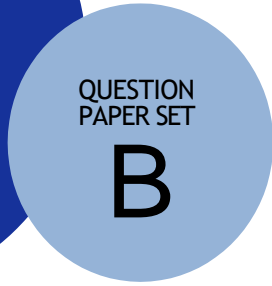




SCO INTERNATIONAL ENGLISH
OLYMPIAD 2023-24



DO NOT OPEN THIS BOOKLET UNTIL ASKED TO DO SO

Guidelines for the Candidate

1. Before the exam begins, you will have an additional 20 minutes to complete the OMR Sheet with personal information.
2. On the OMR Sheet, clearly write your name, **school code, class, roll number, and mobile number**..
3. Four sections make up the question paper:

General , Reason/Assertion , Case Study and Achievers Section. Each question in Achievers Section carries 2 marks, whereas all other questions carry one mark each.

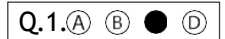
Total Questions - 50

4. Every inquiry must be answered. There are no failing grades. Calculator use is not allowed.
5. There is just ONE right response. Select ONE response choice only.
6. Use only an HB pencil or a blue or black ballpoint pen to indicate your choice of responses by darkening the corresponding circles on the OMR Sheet. E.g.

Q.1: What is the capital of India?

- A. Kolkata B. Mumbai C. Delhi D. Chennai

You must shade the circle next to option C on the OMR Sheet since that is the right response.



7. At the conclusion of the test, hand over the OMR Sheet to the Invigilator.
8. Before attempting the paper, kindly provide your personal information in the box provided on this page. .




Name:.....


Registration ID:..... Contact No.:.....

	FOR QUESTIONS 1 TO 10, CHOOSE THE CORRECT WORD/PHRASE TO COMPLETE EACH SENTENCE.
1.	After the health crisis in his house, Yuvan became ----- about his hygiene. A. corner B. meticulous C. severe D. appropriate
2.	I just welcomed Neha, She bought a ----- of grapes from her native. A. bushel B. bundle C. bunch D. cluster
3.	Agalya's arrival ----- the happiness of Vidya after a long time. A. elevated B. pressed C. figured D. needed
4.	Keerthi gave an -----warning about the complexity of that course. A. adventure B. adverse C. advance D. advert
5.	I have a serious allergy to peanuts, so I ----- it no matter what. A. will have B. can't have C. mightn't have D. may have
6.	You've got a ----- that has not stopped falling yet. A. fallen star B. fall star C. fall'in star D. falling star
7.	My Grandmother traveled to another country before the war ----- in 1984. A. broke down B. broke up C. broke out D. broke of
8.	The internet connection is----- worse in the mountain region. A. many B. any C. more D. much
9.	The ice ----- into water because of the rise in the temperature. A. melted B. molded C. minted D. modified
10.	The rain ----- shortly after her departure from the airport. A. have start B. has started C. been started D. have been started
	FOR QUESTIONS 11 TO 13, REARRANGE THE WORDS/PHRASES TO FORM MEANINGFUL SENTENCE.
11.	A PRESIDENT/ I / ABOUT / DREAMED /BECOMING. a b c d e A. bceda B. adbce C. bdcea D. cedba

12.	<p>HERSELF / A PARTY / SHE / THREWED.</p> <p>a b c d</p> <p>A. bcda B. dabc C. cdab D. abcd</p>
13.	<p>SPANISH /ARYAN / IS TRYING / HARD /TO LEARN.</p> <p>a b c d e</p> <p>A. bdcea B. bcdea C. acdeb D. acdbe</p>
<p>FOR QUESTIONS 14 TO 21, READ THE PASSAGE AND ANSWER THE QUESTIONS THAT FOLLOW.</p>	
14.	<p>The blue whale is the largest animal on the planet, weighing as much as 200 tons. The blue whale has a heart the size of a Volkswagen Beetle. Its stomach can hold one ton of krill and it needs to eat about four tons of krill each day. They are the loudest animals on Earth and are even louder than a jet engine. Their calls reach 188 decibels, while a jet reaches 140 decibels. Their low frequency whistle can be heard for hundreds of miles and is probably used to attract other blue whales.</p> <p>Humpback whales make some of the longest migrations on Earth. Scientists tracked one whale that traveled 11,770 miles over 265 days from its summer foraging area near the Antarctic Peninsula up to its winter breeding area off Colombia and back again to the Antarctic Peninsula. Throughout the Southern Hemisphere, humpbacks make seasonal migrations like this between the tropics and polar waters, moving along the coasts through the waters of 28 countries and the open ocean that lies beyond the jurisdiction of any nation.</p> <p>The growing dangers whales face worldwide along their epic migrations are signs of an ocean in peril, and reveal how these waters connect us all. The Antarctic blue whale is the largest animal on the planet, but it is critically endangered. WWF is working to protect blue whale habitat, and a remarkable number of blue whales were recently sighted in the southern Atlantic Ocean.</p> <p>Whales are at the top of the food chain and have an important role in the overall health of the marine environment. During the 20th century, the blue whale was an important whaling target and even after it was protected and commercial whaling stopped in 1966, exploitation efforts by the humans are persisting.</p> <p>Blue whales are louder than a -----.</p> <p>A. Volkswagen Beetle B. Krill C. Jet Engine D. Frog</p>
15.	<p>----- is measured in Decibels.</p> <p>A. time B. sound C. speed D. distance</p>
<p> </p>	

16.	<p>What is meant by migration?</p> <p>A. stagnant within the same place B. movement from one place to another C. hunting to pacify the hunger D. capacity to defeat everything</p>
17.	<p>Epic migrations are signs of the ocean in -----.</p> <p>A. danger B. nature C. safety D. nourishment</p>
18.	<p>Blue whales use their whistles to ----- other blue whales.</p> <p>A. fight B. tame C. attract D. threaten</p>
19.	<p>----- Whales are known for their seasonal migration.</p> <p>A. Blue B. Humpback C. Antarctic Blue D. Beluga</p>
20.	<p>What is the expansion of WWF?</p> <p>A. World Wildlife Fund B. World Wide Forest C. World Wrestling Fight D. World Weekly Forestry</p>
21.	<p>----- plays a prominent part in the marine environment.</p> <p>A. Food Chain B. Climate Change C. Whales D. Humans</p>
22.	<p>FOR QUESTIONS 22 AND 28, READ THE SIGNS AND CHOOSE THE CORRECT EXPLANATION FOR IT.</p> <div data-bbox="464 1310 727 1667" data-label="Image"> </div> <p>The sign says that</p> <p>A. to operate the machine operation and then read the manual B. to understand the machine operation by reading the manual C. to read the machine operation and then understand the manual D. to write the manual before using the machine operation</p>

23.	 <p>The sign says that</p> <p>A. Do not turn itself B. Do not take a right C. Do not turn left D. Do not take a straight</p>
<p>FOR QUESTIONS 24 TO 30, CHOOSE THE BEST REPLY TO COMPLETE EACH CONVERSATION.</p>	
24.	<p>Akash: Sorry I am late. Do you still want to watch the match with me? Aksay: No, -----.</p> <p>A. that ship has sailed B. that is far from me C. this airplane has arrived D. this is not myself</p>
25.	<p>Seetha: Let's call it a day. Geetha: Yeah, -----.</p> <p>A. We haven't yet decided the name. B. We are overloaded with work. C. We can resume the remaining work tomorrow. D. We will have to go to the office.</p>
26.	<p>Vijay: Do you believe in Magic? Sanjay: No, -----.</p> <p>A. Because I love to see miracles. B. Because I like supernatural things. C. Because I like to be an optimist. D. Because I believe in logical things.</p>
27.	<p>Priya: I hit the sack late yesterday. Ashmitha: Oh! That's why you look so -----.</p> <p>A. energetic B. tired C. enthusiastic D. peaceful</p>
28.	<p>Kirthick: You are good at what you do but have to come early to class. Karthick: Yeah, ----- buddy.</p>

	<p>A. it's okay B. it took a lot of time C. better late than never D. it is not on me</p>
29.	<p>Lakshmi: Hai! How are you? You look so gorgeous in a saree. Saraswathi: I'm good. Thanks! Purple Lehenga looks good ----- you too.</p> <p>A. for B. in C. on D. to</p>
30.	<p>Oviya: Do you have any second thoughts? Kaviya: I -----sure about anything in my life.</p> <p>A. was always B. have never been so C. am thinking D. have to be</p>
31.	<p>FOR QUESTIONS 31 AND 32, CHOOSE THE CORRECT WORD/PHRASE TO COMPLETE EACH SENTENCE.</p> <p>I ----- up my application with a small spelling mistake.</p> <p>A. missed B. messed C. messaged D. misled</p>
32.	<p>I ----- you to lead the group.</p> <p>A. led B. lot C. late D. loud</p>
33.	<p>READ THE SIGN AND CHOOSE THE CORRECT EXPLANATION FOR IT.</p>  <p>The sign says that</p> <p>A. You can use this lift when the building is on fire. B. You cannot use anything in the event of fire. C. It is okay to use the lift when the event is on fire. D. You should not use the lift in case of any fire.</p>
34.	<p>FOR QUESTIONS 34 AND 35, CHOOSE THE BEST REPLY TO COMPLETE EACH CONVERSATION.</p>

	<p>Varun: I am really tired. Can we postpone the trip to some other day? Harshith: I can understand it is ----- to ask but we should reach there today itself to close the deal.</p> <p>A. most B. much C. must D. a lot</p>
35.	<p>Jerry: Sorry! I am not aware of the rules. Maverick: There is no excuse. Everyone ----- to be aware of the rules.</p> <p>A. had B. have C. has D. should</p>
36.	<p>Identify the correct pronoun to use in the sentence: Both Mary and I forgot to bring _____ umbrellas, so we got soaked in the rain.</p> <p>A. our B. us C. them D. they</p>
37.	<p>Identify the correct word order for the sentence: She usually goes to the gym _____.</p> <p>A. on Sunday B. Sunday on C. in Sunday D. Sundays on</p>
38.	<p>We couldn't decide _____ movie to watch, so we ended up not watching anything.</p> <p>A. who B. whose C. which D. whom</p>
39.	<p>Identify the type of sentence: Sarah loves to read books and play the piano.</p> <p>A. Declarative B. Interrogative C. Imperative D. Exclamatory</p>
40.	<p>Which suffix can be added to "care" to form a new word "cautious"?</p> <p>A. -ful B. -less C. -ing D. -est</p>
41.	<p>Which phrase means "to feel very happy and satisfied"?</p> <p>A. Jumping the gun B. On cloud nine C. Piece of cake D. Raining cats and dogs</p>
42.	<p>Which option contains a sentence with a gerund phrase?</p> <p>A. She dances gracefully. B. They are painting a beautiful picture. C. Running in the park is fun. D. The dog barks loudly.</p>

43.	<p>Choose the correct idiom to complete the sentence: Sadhvika was as cool as a _____.</p> <p>A. cucumber B. ice cream C. snowflake D. popsicle</p>
44.	<p>Change the following sentence to the passive voice: "They built a new bridge over the river."</p> <p>A. A new bridge was built over the river by them. B. Over the river, a new bridge was being built by them. C. A new bridge was being built over the river. D. They were building a new bridge over the river.</p>
45.	<p>Which prefix can be added to the word "appear" to mean "happen again"?</p> <p>A. Ex- B. In- C. Re- D. Un-</p>
46.	<p>Which of the following sentences is a declarative sentence?</p> <p>A. The sun rises in the east. B. How beautifully the flowers bloom! C. Don't forget to bring your umbrella. D. Could you please pass me the salt?</p>
47.	<p>Choose the correct tense to complete the sentence: By the time we arrived at the park, the sun _____.</p> <p>A. rises B. rose C. will rise D. rising</p>
48.	<p>Complete the sentence with the correct degree of comparison for the adjective "good": Out of all the students, Sarah is the _____ in mathematics.</p> <p>A. better B. good C. best D. more good</p>
49.	<p>What is the correct arrangement of the words to form a coherent sentence?</p> <p>A. Dog the brown quick jumped fence over the. B. The quick brown dog jumped over the fence. C. Over the dog quick brown fence jumped the. D. Jumped brown dog quick fence over the the.</p>
50.	<p>She is the _____ student in the class, always asking insightful questions.</p> <p>A. intelligentest B. most intelligent C. intelligent D. more intelligent</p>

ANSWER KEY

1	2	3	4	5	6	7	8	9	10
b	c	a	c	b	d	c	d	a	b
11	12	13	14	15	16	17	18	19	20
c	c	b	c	b	b	a	c	b	a
21	22	23	24	25	26	27	28	29	30
c	b	c	a	c	d	b	c	c	b
31	32	33	34	35					
b	a	d	d	c					

SPACE FOR ROUGH WORK



School Connect Online

Learn Apply Evaluate

www.schoolconnectonline.com

